



Nima Construction





Welcome to

Nima Construction

Nima Construction is synonymous with luxury, not merely in the homes we craft but in the experience we deliver.

We bring a family-owned touch to the table, a guarantee of integrity, honesty, and quality that has positioned us as the preferred builder for high-net-worth clientele seeking bespoke residences in the San Francisco Bay area.

Our portfolio, featured in the New York Times, Architectural Digest, ArchDaily, Dwell, and Sonoma magazines, showcases our expertise in creating homes that are not only architecturally significant but also reflective of the unique visions of our clients. We understand the language of high-end architecture and speak it fluently throughout our builds, ensuring that the partnership between builder and architect is seamless, from the first draft to the final nail.



Flawlessly executed bespoke builds

Nima Construction excels in joining projects during the conceptual phase, where we work alongside the owner and the architectural team to infuse our extensive practical construction knowledge and robust organizational resources.

Engaging us early allows for an informed budget crafted from schematic designs, ensuring clarity on the project's trajectory. Our expertise becomes particularly invaluable as we provide insightful value-engineering solutions, aligning ambitious designs with financial realities without compromising on the distinctive luxury and quality that high-end clients demand.

Trust in Nima Construction to bring not just skill, but a visionary partnership to the table.



TABLE OF CONTENTS



Leona / page 8

Melding modern luxury with the tranquility of Northern California’s landscape, we built this 3500-sqft. residence from the ground up. This property is an excellent convergence of expansive glass, warm wood, and minimalist interiors.



Triple Barn House / page 16

Triple Barn House in Sonoma is a truly captivating 1,750-sqft. ground-up build and 7-acre land development that seamlessly combines contemporary design with rustic allure from idyllic surroundings. This property features a 300ft. road, septic, and a well.



Chapman / page 24

The 1100-sqft. Chapman House spec build is a testament to our dedication to crafting beautiful spaces that blend seamlessly with their environment while making a modernist statement.



Marr / page 30

The renovation of this single-family home was a comprehensive project that involved significant architectural and structural changes to enhance its functionality and aesthetic appeal.







Leona

Leona was designed and built as an expression of contrast, sitting in the Bay Area hills. Refined edges shape the property, helping define the home amongst the wild environment.

Key Features

We take pride in this 3500-sqft. architectural marvel, perched within the natural contours of Northern California's hillsides. The mastery of blending striking, contemporary design with the lush landscape is exemplified through expansive glass facades, rich wooden accents, and minimalist interior aesthetics, crafting a dialogue between modern luxury and the tranquil outdoors.

Every detail from this ground-up build, from the sleek, open-concept kitchen to the serene outdoor decks, echoes our commitment to exceptional craftsmanship, precision, and the realization of our clients' most aspirational visions.

*Refining sophistication.
We build enduringly
flawless homes.*







Crafting breathtaking spaces with timeless elegance.

This space exudes a light, modern minimalism, characterized by bright, airy spaces with an open-concept layout, pristine white walls, and wide plank hardwood flooring that provides a warm contrast. The design emphasizes clean, geometric lines and a flood of natural light, with large windows and strategically placed skylights enhancing the spacious feel. The sleek kitchen serves as a focal point with state-of-the-art appliances, while seamless integration of the indoor and outdoor living spaces underline the home's contemporary elegance.









A symphony of light and space, this airy entryway is defined by its crisp white walls, a clever floating wooden storage cabinet, and an elegant, minimalist staircase.



Triple Barn House

Our team worked closely with the architects to deliver a 1,750-sqft. residence that fuses contemporary design with the pastoral charm of its surroundings.

Key Features

The home's defining feature is its triple-gabled Cor-Ten steel roof, segmenting the structure into three distinct zones for work, retreat, and communal gatherings. The robust steel facade harmonizes with the iron-rich, rust-colored soil of the hillside, a deliberate nod to Sonoma Valley's vernacular architecture.

This home is a delicate balance of space that feels expansive and integrated, while still ensuring each zone maintains its unique function under one cohesive design.

Triple Barn House is a testament to innovative architecture and bespoke construction that respects and reflects its natural and cultural context.







Functionality and flow were paramount in the design, as seen in the professional-grade kitchen with sliding glass doors that open to a vast outdoor space.





This two-level, steel-clad home stands on a 7-acre plot, reflecting the region's agricultural spirit while prioritizing fire resistance and natural integration.





Unique design and meticulous craftsmanship, working hand-in-hand.

Entry to the house is marked by a grand staircase leading to the upper level, where the main living spaces bask in natural light, thanks to extensive glazing that also frames the idyllic Sonoma landscape. Below, the lower level houses a double-height office and a bonus room, alongside three bedrooms and two-and-a-half baths. The home is a sanctuary for both work and leisure, with trails for exploring nature and a private deck with soaking tub for tranquil evenings under the stars.







Chapman

Nestled in a picturesque enclave, the Chapman House is a striking testament to Nima Construction's dedication to crafting homes that resonate with modern sophistication while also embracing the warmth of a family home.

Key Features

As you ascend the front stairwell, you're greeted by a generous open-plan living space, where floor-to-ceiling windows flood the area with natural light and blur the line between the indoors and the community. The continuity of design is evident in the seamless integration of living, dining, and kitchen areas, creating an environment that's ideal for intimate family moments as well as grand-scale entertainment.

Minimalist yet expressive, the interior architecture showcases clean lines and a monochromatic palette, accented by the occasional bold artwork. The exterior is a dialogue between the raw and the refined, where sleek, dark-hued panels are juxtaposed with organic wood accents.

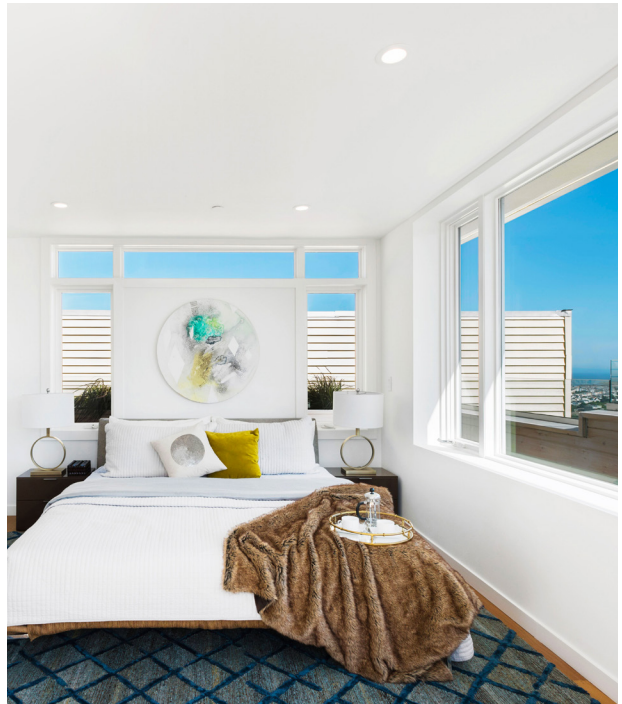
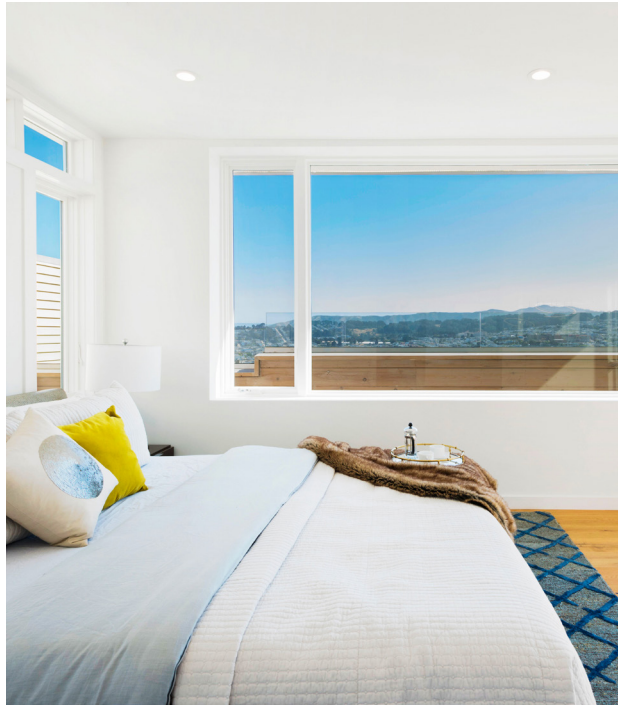
*Distinct, striking
architecture meets
luxurious comfort.*





The undercroft merges modernity and nature with a rhythmic pattern of pavers and grass beneath a warm wooden ceiling.







15

Marr

The renovation of this single-family home involved significant architectural changes to enhance functionality and aesthetic appeal.

Key Features

The main challenge at Marr was transforming a disjointed, one-story structure into a cohesive space. This was accomplished by reimagining the elongated shape and original stair location, creating a hallway-like effect.

By expanding the foundation, we added square footage (from 3,232 to 4,476 sqft.) and improved the overall flow. Relocating the staircase to the center of the home created better connectivity between the lower and upper living space and large sliding glass doors were installed to enhance views and facilitate open design principles.

Major additions also included the creation of an additional luxurious upper-level suite to elevate the living experience, as do the high-quality finishes, including a chef's kitchen and a sleek office space hidden behind cleverly positioned secret doors.

Thoughtfully sleek, this space's design effortlessly combines modernity and comfort.







This space is not just a testament to the home's architectural evolution but a celebration of the panoramic beauty it was reimagined to capture.



The house now boasts a chef's kitchen with top quality Henrybuilt cabinets, a striking yellow Lacanche range, and island seating for five.







This multi-level home takes full advantage of the city view with floor-to-ceiling windows and outdoor lounge spaces.